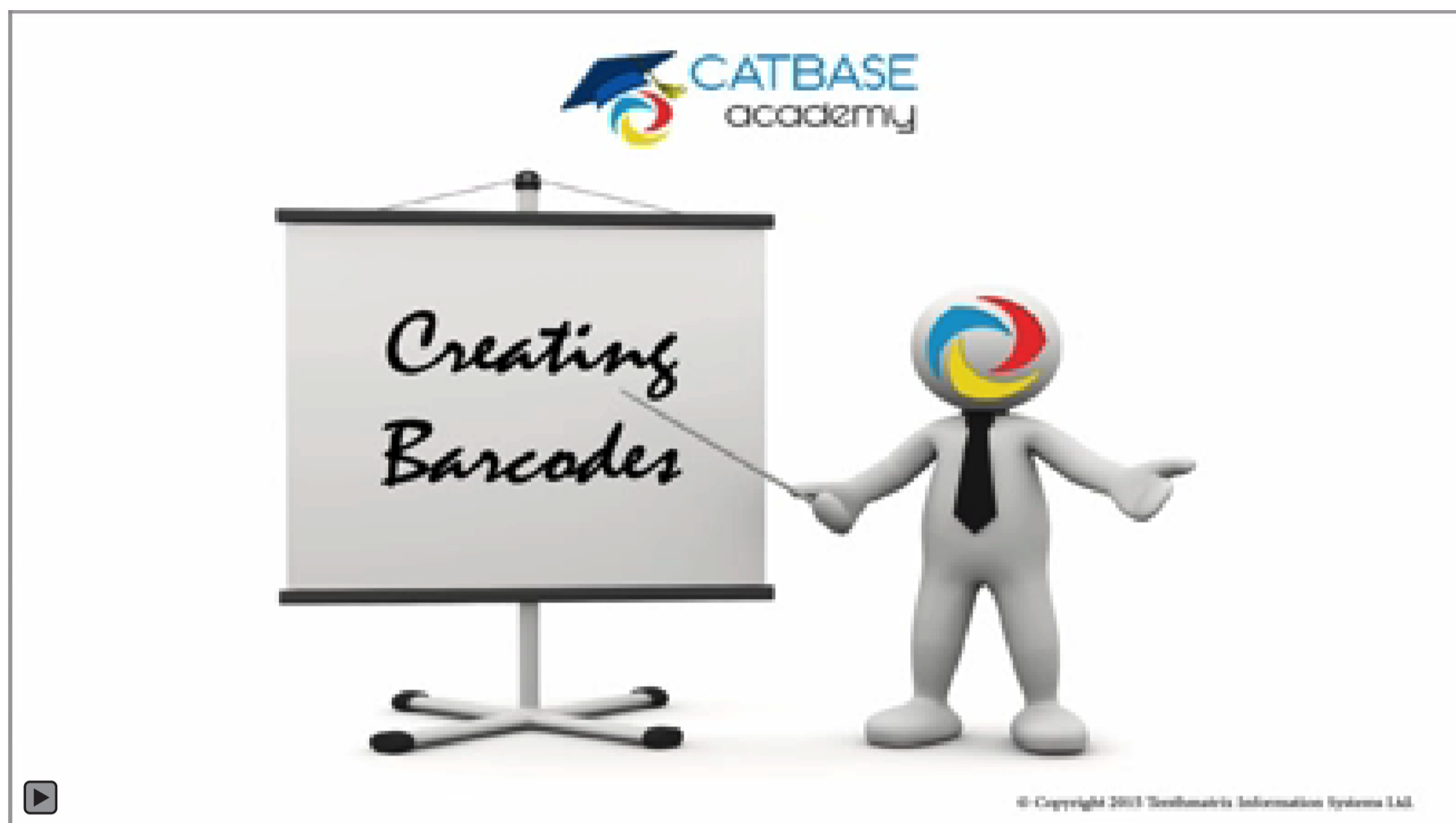




# CREATING BARCODES

Starting with Version 7.3, CatBase can create all kinds of barcodes directly from your data. All the popular barcode formats are supported, such as QR Codes, 3 of 9 (Code 39+), ISBN, EAN, Code 128, and many more.



If you want to include barcodes in your publications, with CatBase it's simply a matter of setting up an Element to create them. The bar codes are created "on the fly" when the data is published, and they are saved as individual images into a folder called "barcodes" in the same folder as your data export folder. Many different barcode formats are supported, such as QR Codes, 3 of 9, EAN, ISBN, and lots more.

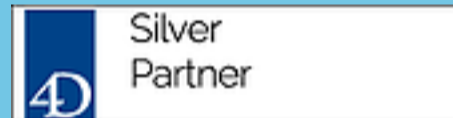
*This feature was added in CatBase Version 7.3.*

The following bar code formats are supported:

- Australia Post Redirection
- Australia Post Reply Paid
- Australia Post Routing
- Australia Post Standard Customer
- Aztec
- Aztec Runes
- Channel Code
- Codabar
- Code 11
- Code 128
- Code 128 (Subset B)
- Code 16K
- Code 2 of 5 Data Logic
- Code 2 of 5 IATA
- Code 2 of 5 Industrial
- Code 3 of 9 (Code 39)
- Code 32
- Code 93
- Code One
- Composite Symbol with EAN linear component
- Composite Symbol with GS1 DataBar Expanded Stacked component
- Composite Symbol with GS1 DataBar Extended component
- Composite Symbol with GS1 DataBar Limited component
- Composite Symbol with GS1 DataBar-14 linear component
- Composite Symbol with GS1 DataBar-14 Stacked component
- Composite Symbol with GS1 DataBar-14 Stacked Omnidirectional component
- Composite Symbol with GS1-128 linear component
- Composite Symbol with UPC A linear component
- Composite Symbol with UPC E linear component
- DAFT Code
- Data Matrix
- Deutsche Post Identcode
- Deutsche Post Leitcode
- Dutch Post KIX Code
- EAN
- EAN-14
- Extended Code 3 of 9 (Code 39+)
- FIM

- Flattermarken
- Grid Matrix
- GS1 DataBar Expanded
- GS1 DataBar Expanded Stacked
- GS1 DataBar Limited
- GS1 DataBar-14
- GS1 DataBar-14 Stacked
- GS1 DataBar-14 Stacked Omnidirectional
- GS1-128
- HIBC Code 128
- HIBC Code 39
- Interleaved 2 of 5
- ISBN (EAN-13 with verification stage)
- ITF-14
- Japanese Post
- Korea Post
- LOGMARS
- Micro QR Code
- MicroPDF417
- MSI Code
- MSI Plessey + mod 10
- MSI Plessey + mod 10 + mod 10
- MSI Plessey + mod 11
- MSI Plessey + mod 11 + mod 10
- NVE-18
- PDF417
- PDF417 Truncated
- Pharmacode One-Track
- Pharmacode Two-Track
- PLANET
- Plessey Code
- PostNet
- PZN
- QR Code
- Royal Mail 4 State (RM4SCC)
- Standard Code 2 of 5
- Telepen Alpha
- Telepen Numeric
- UPC A
- UPC E
- USPS OneCode

Crown  
Commercial  
Service  
*Supplier*



© Copyright 2017 CatBase Publishing Systems Ltd.